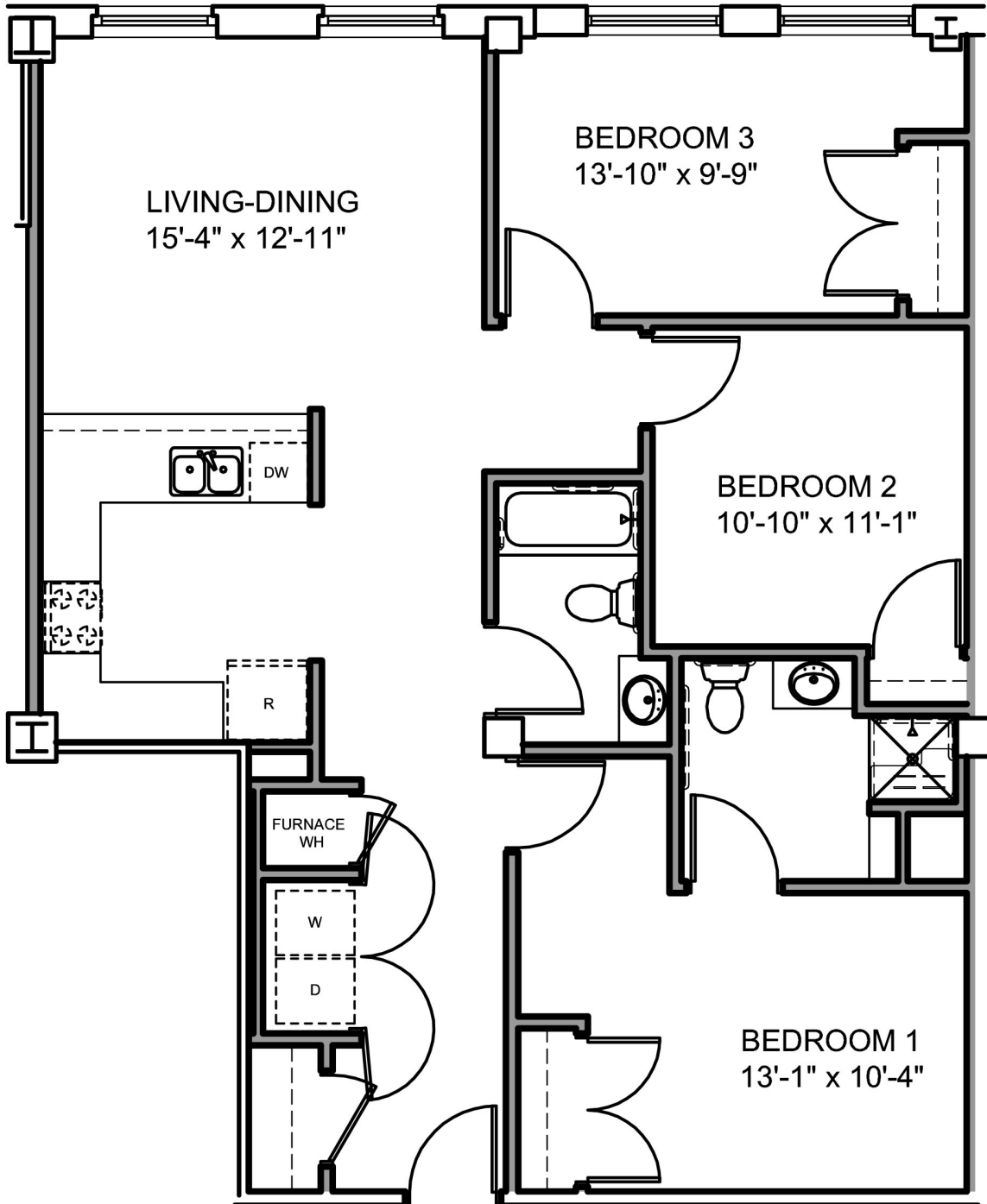


3 Bedroom Floor Plan A&B - ADA Compliant

1,237 square feet | Units 604, 704





Overview of Project

Introducing Wiley Plaza... a complete renovation of Hutchinson's historic Wiley Building. Located at the corner of 1st and Main in Hutchinson, Kansas, Wiley Plaza is a creative response to a growing demand for rental living in the area. In addition to approximately 11,500 square feet of retail space, Wiley Plaza is comprised of 73 one, two, and three bedroom apartments, with a mixture of affordable housing and market-rate units. We comply with the Fair Housing Act. Ask us about handicap accessibility. Water and sewer utilities, snow removal and refuse collection services are included in the rent.

Apartment Amenities Include:

- attached parking garage
- elevator access
- new energy-efficient appliances and lighting
- cable, internet and telephone capabilities
- furnished washer and dryer in each unit
- all electric central heat and air-conditioning
- electric range with microwave and self-cleaning oven
- frost-free refrigerator
- built-in dishwasher
- garbage disposal
- carpet and laminate flooring
- bathtub with shower or walk-in shower
- high ceilings
- large combination windows with blinds
- community room with full kitchen available to all residents
- ceiling fans
- security camera system
- access control on outer doors
- fire sprinkler system throughout building

23 One-Bedroom Apartments

675 to 856 Square Feet
Monthly Rents Starting at \$395

38 Two-Bedroom Apartments

853 to 1,126 Square Feet
Monthly Rents Starting at \$440

12 Three-Bedroom Apartments

1,237 to 1,363 Square Feet
Monthly Rents Starting at \$465

For Additional Information Contact:

Wiley Plaza
C/O Manske & Associates, L.L.C.
8918 East Bradford Court
Wichita, Kansas 67206
Telephone: 620.662.4400
Email: info@wileyplaza.com